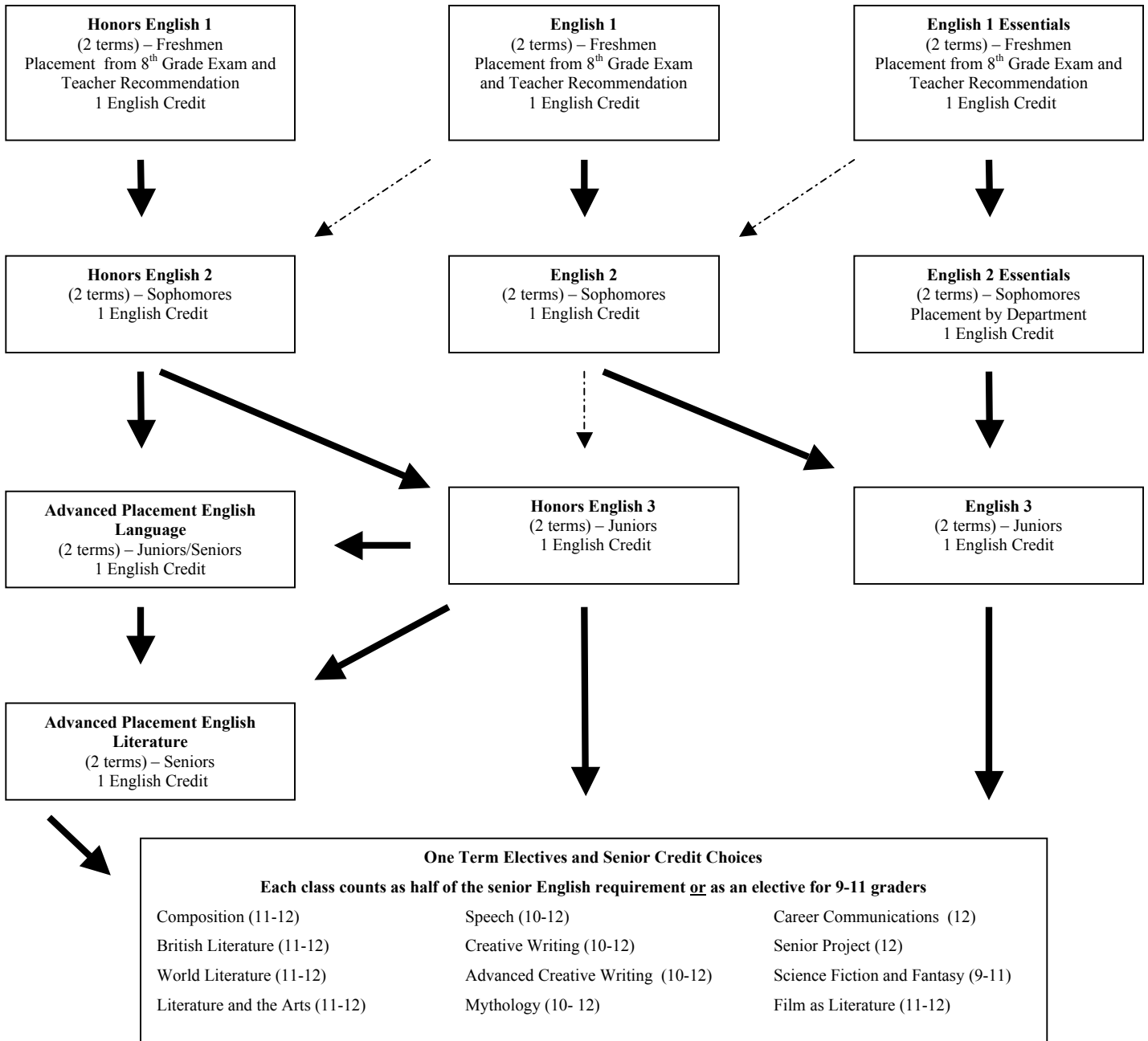


English Department Flowchart 2009-2010

- Freshmen enter into English 1 Essentials, English 1, or Honors English 1 based on their 8th Grade Placement Test and teacher recommendation.
- For any changes outside of the common course flow, please contact your last English teacher who will notify the English Department chair and your counselor.



Non English Credit Electives
Intro to Journalism (9-12)
Journalism Newspaper (10-12)
Journalism Yearbook (10-12)

Common course flow With Department Chair approval