

MUNDELEIN



HIGH SCHOOL

Road to Readiness

Presented to the MHS BOE on July 14, 2020

Planning for the fall scenarios

- **Scenario 1:** Phase 5- full in-person instruction
- **Scenario 2:** Phase 2 or 3- full remote instruction
- **Scenario 3:** Phase 4- blended schedule with up to half of our students attending 2 or 3 times per week
 - Scenario 3 is our most likely scenario in August given the current recommendations from our medical partners, the CDC, IDPH and the ISBE.

Decision Making Criteria

- Health and safety of our students and staff
- High quality education
- Financially responsible

The importance of in-person instruction

- ❖ IL State Board of Education strongly encourages districts to provide in-person instruction for students while following CDC and IDPH guidelines. Appropriate social distancing, face coverings, enhanced sanitation measures, and other accommodations will be necessary to ensure the safety of students, staff, and their families.

Stakeholder Input

- Staff, student, and parent surveys
- Focus groups with parents
- Focus groups with staff
- Sub-committees with staff and administration

Return to School - Parent Survey

Dear Mundelein High School Parents,

The Return to School Task Force created a survey in an effort to obtain feedback from parents regarding the guidelines, models, and concerns they may have as school reopens next year. Please fill out the survey below by the end of Sunday, July 12, 2020.

Sincerely,
Dr. Anthony Kroll, Principal

* Required

What grade level will your student(s) be entering at the start of the 20-21 school year? Check all that apply. *

- 9th grade
 10th grade
 11th grade
 12th grade

How comfortable are you with your student returning to the school building in August if health and safety guidelines from the Center for Disease Control, the IL Department of Public Health and the State Board of Education are followed. *

1 2 3 4
Not comfortable ○ ○ ○ ○ Very comfortable

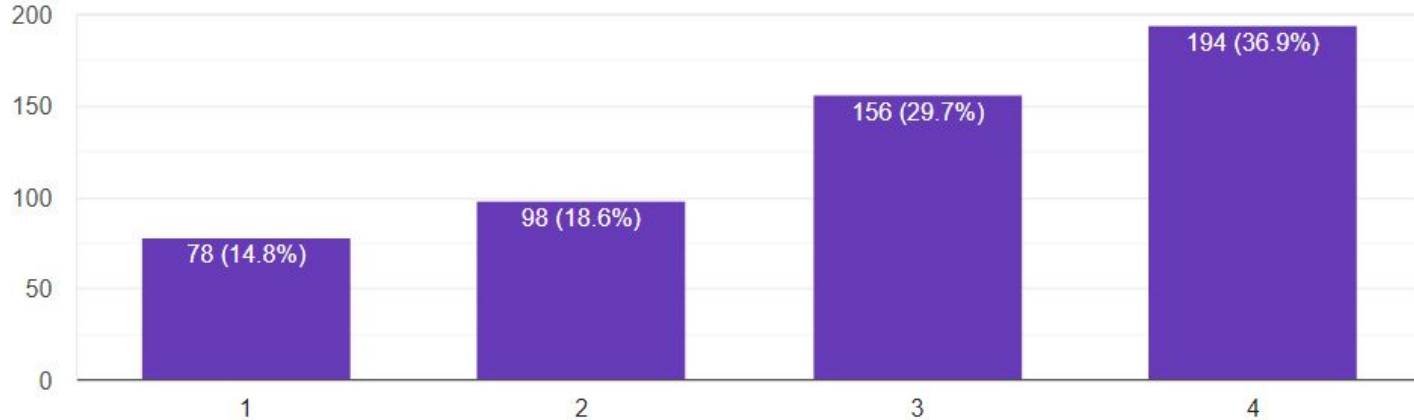
What is your preferred option for reopening school in the fall? *

- Full return to school - This would require the entire school population to be present on campus.
 A hybrid model - A rotation of 50% of students physically at school while 50% students learning virtually from home.
 Full eLearning at home - All students learning remotely.
 Other: _____

Parent Survey- As of July 9th (526 responses)

How comfortable are you with your student returning to the school building in August if health and safety guidelines from the Center for Disease Control, the IL Department of Public Health and the State Board of Education are followed.

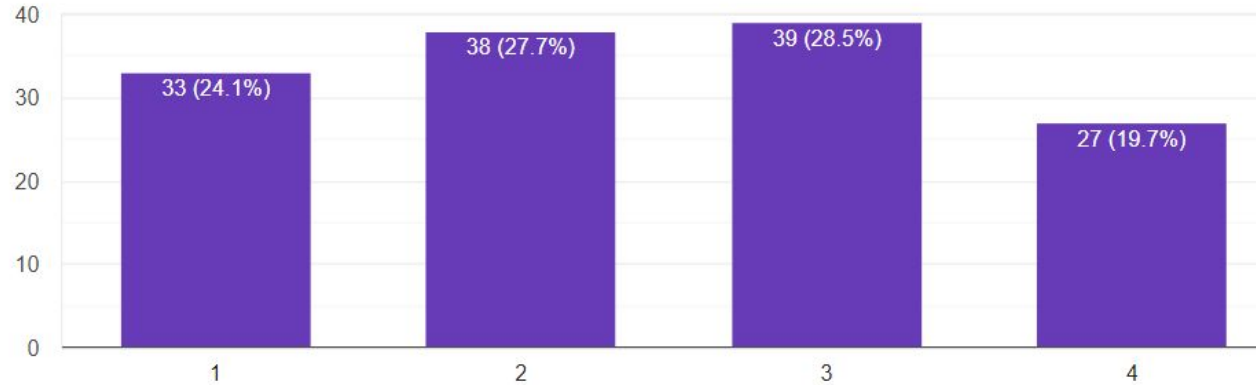
526 responses



Spanish Speaking Parent Survey - 137 responses

¿Qué tan cómodo se siente que su estudiante regrese al edificio escolar en agosto si se siguen las reglas de salud y seguridad del Centro para el Control de Enfermedades, el Departamento de Salud Pública de IL y la Mesa Directiva de Educación del Estado?

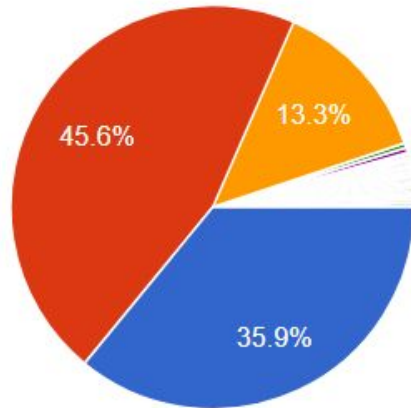
137 responses



Parent Survey

What is your preferred option for reopening school in the fall?

526 responses

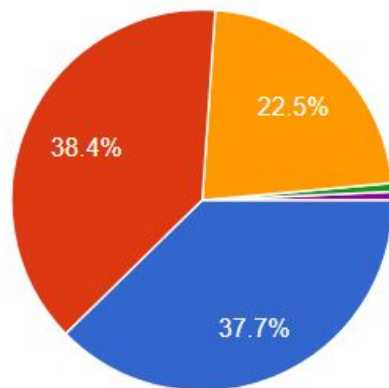


- Full return to school - This would requi...
- A hybrid model - A rotation of 50% of s...
- Full eLearning at home - All students l...
- Regular class in zoom format
- 1 week in person learning -2 weeks el...
- Full return -NO masks, NO excessive...
- I really don't know. I'm torn right now....
- Truly torn between the hybrid and elea...

Spanish Speaking Parent Survey

¿Cuál es su opción preferida para reabrir la escuela en el otoño?

138 responses



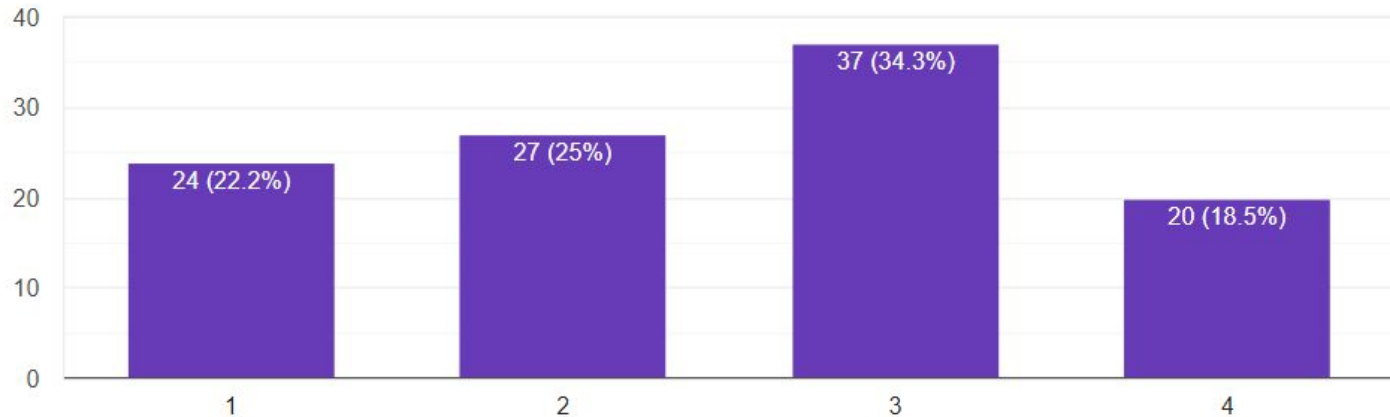
- Un regreso completo a la escuela con consideraciones y recomendaciones d...
- Un enfoque híbrido: algunos estudiantes están físicamente en la escuela y otro...
- Aprendizaje electrónico completo en casa
- Que a todos se les den la oportunidad de ir a la escuela en diferentes horario...
- Yo creo que está bien dividir los estudiantes

Staff Survey Feedback- As of July 9th - 108 responses

The IL State Board of Education strongly encourages schools bring students back into the building for in-person instruction. How comfortable are you with returning to the building if CDC and ISBE health and safety guidelines are adhered to?



108 responses



Quotes from the staff survey

- “If I’m going to be back full-time then the school district that my children go to need to make sure my children are back full-time. My #1 concern is what I’m going to do if my own children are on a hybrid model and how I will manage caring for them, doing Elearning with them, while also trying to work in person.”
- “Ensure students wear masks; do not allow students who refuse masking to remain in building. Daily temperature checks for all- no self certification for students.”
- “Issues of space and maintaining distance (with students in the classroom, sharing classrooms with other teachers, when planning in offices, eating lunch, and moving about the building during passing periods),”
- “Establish procedures to strictly enforce mask-wearing by staff and students, provide ample hand sanitizer in each room (like a doctor's office), increase passing time to allow everyone to wash hands thoroughly, temp students and staff as they arrive (like most offices are doing), de-stigmatize staying home when you are sick.”

Scheduling Committee Considerations

- ❖ **Maintain a safe environment for our students and staff**
- ❖ **Maximize in-person time with students**
- ❖ Schedule needs to work with other areas/committees-transportation, instruction, etc.
- ❖ Allow our most vulnerable students to attend every day.
- ❖ Plan for unstructured times (lunch, free period, etc.) to meet ISBE directives.
- ❖ Make passing periods as safe as possible.
- ❖ Create a temperature scan process that is logistically possible.
- ❖ Ensure intervention spaces are accessible while meetings ISBE directives.
- ❖ Ensure large PE and music courses have sufficient space inside when needed.

Scheduling Committee Recommendation

Hybrid Schedule: student groupings alternate in-person and remote days

A/B Days (Every Other School-Day):

- ❖ Group 1: A Days
- ❖ Group 2: B Days
- ❖ Group 3: Every Day
- ❖ Group 4: 100% Remote

A/B Days Example

Week 1	Week 2	Week 3
Monday - A Schedule	Monday - B Schedule	Monday - No School
Tuesday - B Schedule	Tuesday - A Schedule	Tuesday - A Schedule
Wednesday - A Schedule	Wednesday - B Schedule	Wednesday - B Schedule
Thursday - B Schedule	Thursday - A Schedule	Thursday - A Schedule
Friday - A Schedule	Friday - B Schedule	Friday - B Schedule

Daily Schedule

Teacher planning time or virtual office hours	7:45-8:25
Teacher planning time or virtual office hours <input type="button" value="v"/>	8:25-9:25
Period 1	9:25-10:05
Period 2	10:10-10:50
Period 3	10:55-11:35
Period 4	11:40-12:20
Period 5	12:25-1:05
Period 6	1:10-1:50
Period 7	1:55-2:35
Period 8	2:40-3:20
After school office hours	None

Lunch

- ❖ No more than 50 people are allowed in any space at one time.
- ❖ Students can remove their masks to eat.
- ❖ Students will be assigned a specific location and seat for their lunch period. They must remain in this location the entire lunch period.
- ❖ Lunch distribution will continue for remote learning days.
- ❖ Off campus lunch options will continue.

Health and Safety Precautions

- ❖ Masks will be worn by all students and staff
- ❖ Temperature Scans:
 - All students and staff
 - Before getting on the bus (bus riders)
 - Before entering the building (non bus riders)
- ❖ Daily in-person or self-certification of staff and students:
 - Questions will be asked at staff and student entrances
- ❖ Procedures for students and staff who have symptoms of COVID-19
- ❖ Contact tracing- Assigned seating and assigned locations at all times while in the building

Social Distancing

- ❖ Signs throughout the building
 - 6 feet apart
 - Split hallways
 - Possible one way staircases
- ❖ Move desks as far apart as possible
 - Rows with all students facing the same way
- ❖ While our goal is to keep students 6 feet apart, this will not be possible in all spaces throughout the school building



Facilities and Sanitation

- ❖ Plexiglass shields in classrooms
- ❖ Sanitation between classes
- ❖ Deep cleaning in the evenings
- ❖ Limited use of lockers and no shared lockers
- ❖ Weight room and fitness areas modified for distancing




Facilities and Sanitation



- Hand-free paper towel dispensers
- Washroom fixtures modified/placed out of service
- Stop points at office entrances
- One way halls and stairways
- Floor, wall, and ceiling signage

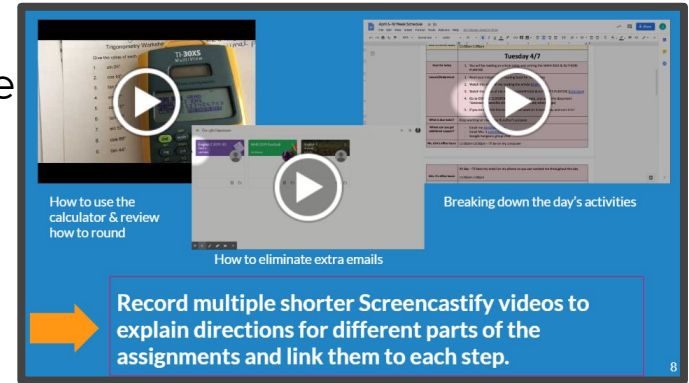
In-Person Instruction



- ❖ Direct instruction from teachers
 - ❖ Students in rows with minimal movement in the classroom
 - ❖ Independent and guided practice and application
 - ❖ Whole class discussion
 - ❖ Q and A among teachers and students
 - ❖ Turn and talk with a peer
 - ❖ Additional strategies may be used to enhance engagement while keeping students and teachers safe
- 

Remote Learning Days

- ❖ Students will be required to log into their Canvas pages for each course to see their remote assignments and confirm their attendance for the day.
- ❖ Students will watch a video, complete an assignment, engage in a remote discussion, etc.
- ❖ Students will have access to remote academic support throughout the day.
 - At least one staff member in the Literacy Center and the Math Lab will provide remote support for students before school and throughout the day.
- ❖ Students will have flexibility as to when they want to complete their assignments on remote learning days.




Specialty Classes



Physical Education:

- ❖ No Locker Room
- ❖ Individualized activities- yoga, racket-based sports, mindfulness
- ❖ Minimize shared equipment

Music:

- ❖ Smaller Groups
 - ❖ Outside spaces
 - ❖ Auditorium for a larger space
 - ❖ Protection for teachers when directing students
- 

Special Education

- ❖ Students with IEPs for whom more intensive support is required will receive five days per week of instruction in person.
- ❖ IEPs will be reviewed and amended by teams as needed to accommodate for needs that arise.
- ❖ Related services will be a combination of push-in, pull-out and (potentially) through virtual means.

Students who will be 100% remote

- ❖ Parents can choose to have their students opt for 100% remote instruction for a semester at a time.
 - For classroom consistency, students cannot transition back and forth between remote and in-person instruction
- ❖ Teachers will upload all course materials on their Canvas sites
 - Video lectures
 - Assignments
 - Pre-recorded teacher videos
 - Additional supplemental resources

Transportation

- ❖ Busing
 - Capacity per the IL State Board of Education is 50 people per bus
 - MHS staff on buses
 - Temperature checks and certifications BEFORE students get onto the bus
 - Assigned seating on the bus
 - Open windows when possible
- ❖ Parking
 - A/B days allow more students to park at MHS



The Freshmen Experience

Freshman Orientation will occur in multiple steps:

- ❖ In Early August, all 9th grade students will come to MHS to:
 - Have Yearbook/ID photos taken
 - Pick up Chromebooks
- ❖ LinkCrew will execute an online, virtual Freshman Orientation before the start of the school year.

Next Steps and Questions

- Continue to gather and analyze input from stakeholders.
- Develop the process for lunch--both location and distribution.
- Continue to develop the health and safety protocols for staff and students.
- Professional development will take place on our learning management system, Canvas (required for all classes), and how to teach on a hybrid schedule.

What questions do you have for us?
